



Newsletter

REACHING INTO *THE FUTURE*

Marine Reach’s Foundations Internship

During the month of May, Marine Reach hosted their first four-week Foundations Internship.

Participants received teaching on a variety of topics, including salvation, hearing God’s voice, Lordship, The Great Commandment, and The Great Commission.

Each of the interns stayed at the base full time, participating in the regular events of the Marine Reach community. Several of the interns chose to stay on for a one-week local outreach where they did evangelism, prayed for different spheres of society around Tauranga, led a Bible study with youth in Reporoa, and practically served at Pregnancy Choice and Vincent House.

For the staff, one of the highlights was seeing the interns grow, even in four short weeks, and learn God’s heart for each individual they encounter. And for the students, the experience helped them step deeper into their identities as sons and daughters of God, seeing his heart for them and also his heart for those around them.

Ashley Hernandez, the coordinator of the Foundations Internship, summed up the experience in her own words: *“The Foundations Internship was a beautiful display of how God moves in the hearts of man. The interns came hungry for what God would provide for them in this season, and God faithfully showed up. For me there is nothing more incredible than when you take a step of faith, and allow God to move. He did just that.”*

After weeks of praying for the interns, traveling all over the North and South Islands to share about the internship opportunity, and pouring their time, energy, and hearts into the interns (even before knowing them), the Foundations Internship staff concluded that they are so grateful to have been a part of this initiative. They witnessed Kiwis find themselves in the Lord, and leave Marine Reach knowing where they stand with God, and ready to impact their homes and communities.



Follow our accounts on facebook & instagram:
FB: @marinereachtraining Insta: ywammarinereach



To find out more, visit www.marinereach.com



Equipping



Seeking



Sending



Discipling



Men's Event at the Family Care Centre

What happened when the Family Care Centre truck rolled into a familiar community to pick up the local men for a men's event recently?

The truck filled up! In fact, even as the truck filled, more came running to catch a ride, necessitating multiple trips to transport all the men wanting to attend back to the Family Care Centre for the day's program.

Each week, Patick Johnny leads Mat Time at the nakamal (gathering place). Recently, the FCC staff have also hosted two, two-day events for these men. These events include lunch both days, a soccer competition, small groups discussions, and conversation about God's design and intentions for men in society and in their families.

At the April event, the FCC staff anticipated providing lunch for 30 men, but as lunchtime approached the first day, 85 men were ready to eat the meal. The resourceful and efficient team effort from the event volunteers ensured that everyone was well fed - a testimony in itself of God's provision and the amazing character of the FCC staff!

The next day, Patick noticed two unfamiliar faces in his small group. To his surprise, when questioned, they shared that they were not residents of any of the three villages Patick typically works with, instead, these two men had heard about the event via word of mouth and had walked over an hour to attend!!

The event in June was equally well received, and about 35 men made a public declaration of trusting in Jesus for their salvation, and committing to following and submitting to His ways.

As the relational investment continues among these men, Patick is encouraged by their development in confidence to express their ideas and participate in active learning. In this, Patick sees a real desire to grow.

As a ministry, we are excited to see what God has in store for these men as they learn to walk with Him.

For more information on the Family Care Centre and how you can also support the work happening there, please visit: www.familycarecentre.org



Growing Indigenous Leadership

One of the major goals of any mission's organisation is to see indigenous leadership raised up to build and grow a ministry within their own nation. In this regard, Covid19 has been a blessing! With the borders of Vanuatu closed, our team of NiVan and international leaders have taken on the challenges to see the work of Marine Reach grow in the nation. Stepping up and making the hard decisions have turned our team into a seasoned group of leaders ready to take on the challenges God has presented to them.

This is reflected in our up-coming Discipleship Training School at our Family Care Centre in Vanuatu with approximately thirty students applying to attend. Not only is this number of applicants for one school quite rare in the South Pacific, the small number of staff taking on this challenge is quite daunting.

Many of the students come from backgrounds of domestic abuse and promiscuity, but the immense rewards of seeing lives radically changed by the power of God's Holy Spirit is deeply moving. Many of these students will move on to become staff with Marine Reach while others will go back to serve in their local churches or grow into positions of influence in their local communities.

One challenge our staff are faced with is the need for sponsorship for each one of our students who all come from lower social economic areas. But just \$500.00 will help sponsor a student for five months in this life-changing program. This is an investment not only in a young person's future but an investment in the nation of Vanuatu as a whole. Every sponsor will receive a photo of the student you are sponsoring so you will be able to keep up with their progress and your donation is tax deductible in New Zealand.



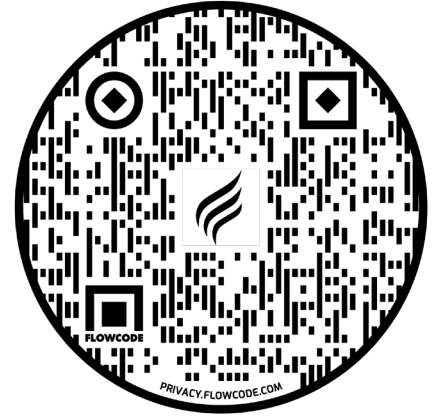
\$500 help's sponsor a student for five months in this life-changing program.

You can donate at: **06 0241 0291419 27** and don't forget to check us out at www.familycarecentre.org

Thank you!

MONTHLY DONATIONS

Your support is crucial to us as we seek to double our efforts and reach out across the Pacific into the lives of those who need us the most. Simply scan the QR code with your smartphone's camera, and click the link that appears on your screen to set up a monthly donation. Even a few dollars can go a long way.



DONOR PROJECTS

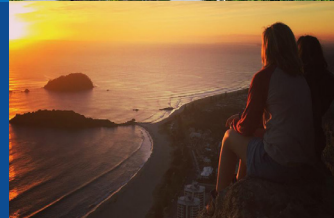
- Deeply needed dental and medical supplies for Vanuatu; \$5000.
- Sponsor one DTS student in Vanuatu for \$500.00 and change a life forever.



Many thanks to those who have generously given toward our Couple's Chalet project. We are beginning construction on the first chalet.

PRAYER PROJECTS

- Please pray for the students preparing to join our upcoming July DTS's in both Tauranga and at the FCC.
- Please pray for wisdom in pioneering new initiatives across the ministry.



For more information on Marine Reach, contact:

New Zealand: info@marinereach.com
Vanuatu: info@familycarecentre.org
Fiji: info-fj@marinereach.com
USA: maipayne@att.net

M/V Pacific Hope:
volunteer@mvpacifichope.org
M/YNext Wave:
volunteer@mvmynextwave.org

Websites:
www.marinereach.com
www.familycarecentre.org
www.marinereachfiji.com
www.mvpacifichope.org

Cut along the dotted line and include your donation with the slip below in the enclosed postage-paid return envelope.

With deep regret our bank is no longer processing checks after 31 May 2021. This may cause some distress for some of our donors. If this is the case please call us at 07 543 3787 and ask for our Accounting department. Our staff will help you work through alternative ways of donating. In the meantime we are removing cheques as a method to receive or make payments after 31 May 2021. Foreign cheques in Australian Dollars (AUD), Canadian Dollars (CAD), Great British Pounds (GBP) and United States Dollars (USD) will still be able to be deposited until further notice.

For Bank Transfers:

Account#/IBAN:
06-0241-0291419-00
 Routing #/Swift Code: **ANZBNZ22**
 ANZ Bank New Zealand Limited

USA:

Account # **157517704159**
 Routing Number # **121122676**
 Swift Code # **USBK US44 IMT**

Or Online at:

www.marinereach.com/donate

Bank Address:

ANZ Centre
 23-29 Albert Street,
 Auckland 1010, NEW ZEALAND

Amount:	\$25	\$50	\$75	\$100	\$1000
General Donations					
Family Care Centre					
This months donor project					
Other Amount:					
Purpose:					

* Please include your Marine Reach Donor Number on all cheques and as a transaction reference. If you've lost it, or would like to get one, please let us know.

Write your email address below to subscribe to our newsletter: